

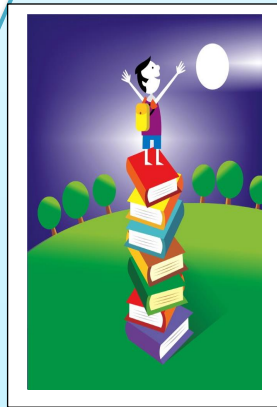
Social-Emotional Learning



In order for our students to develop mentally, they must learn positive **social** and **emotional skills**. As educators, we must scaffold social-emotional learning just like we teach other curriculum.

According to Zins, Bloodworth, Weissberg, & Walberg, “**SEL (Social-Emotional Learning)** is a *process* through which we learn to **recognize** and **manage** emotions, **care about** others, **make good** decisions, **behave ethically & responsibly**, **develop positive relationships** and avoid negative behaviors.”

Social-Emotional Learning (SEL) Triangle



Intensive
Individual
Interventions

Social Emotional
Teaching Strategies

Creating Supportive Environments

Positive Relationships with Children,
Families & Colleagues